

HandEngineering

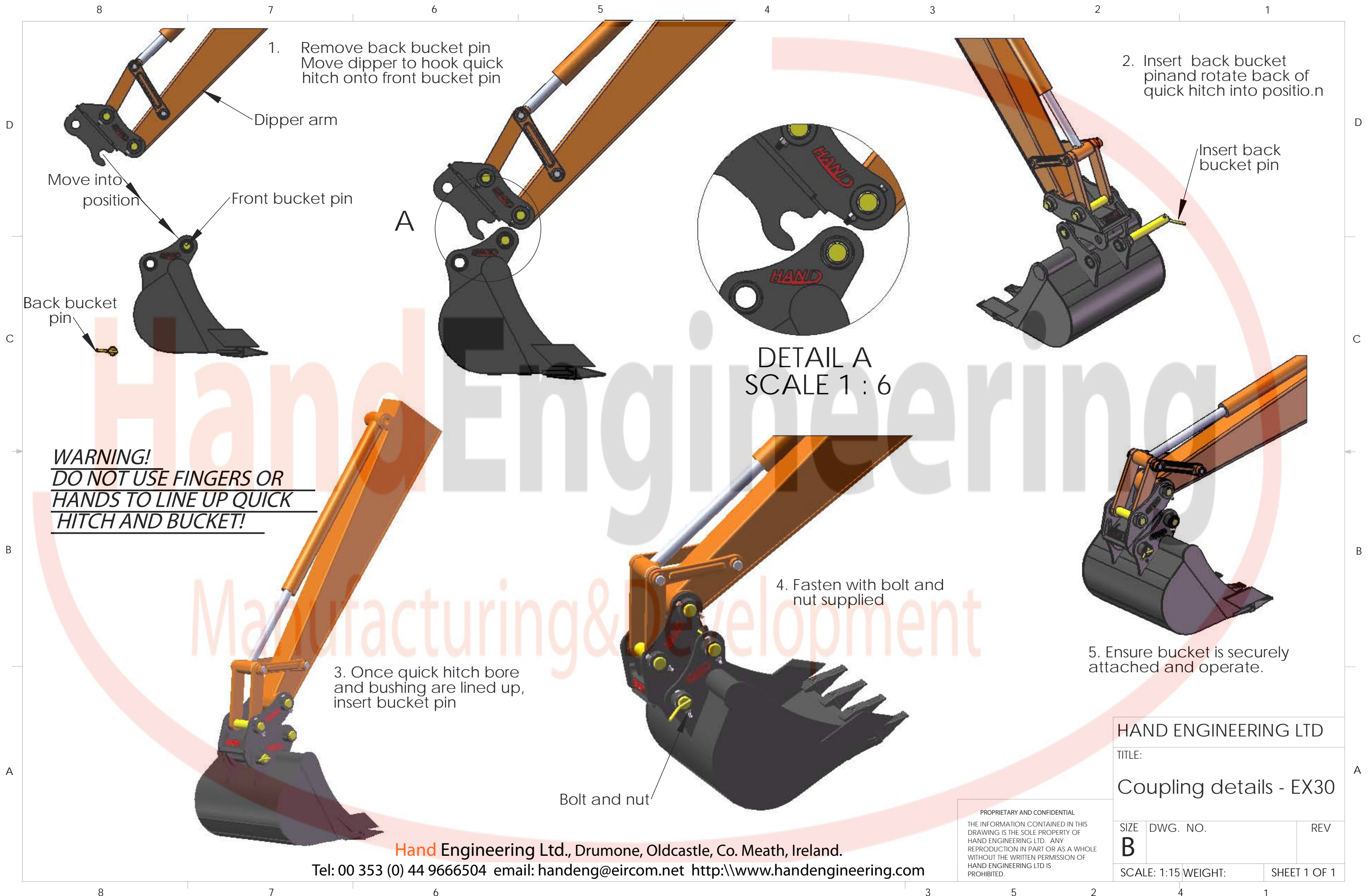
Manufacturing&Development



Hand Engineering's Semi Quick Hitch

- > Simple in operation but High in Strength
- > Safety ensured - back pin alignment ensures positive and safe fit up at all times
- > Constructed of high grade material
- > Designed to work with most available attachments
- > Easy to fit in three easy steps
- > All semi quick hitches supplied with one taper pin
- > Fits all Makes\Models of Mini-Excavators up to 7 tonne
- > Mix & Match hitch available to suit customer's requirements
- > Cost Effective semi quick hitch

Hand Engineering Limited,
Dromone, Oldcastle, Co. Meath, Ireland
Tel: 00 353 44 9666504
email: handeng@eircom.net
<http://www.handengineering.com>



1. Remove back bucket pin
Move dipper to hook quick
hitch onto front bucket pin

2. Insert back bucket
pin and rotate back of
quick hitch into position

DETAIL A
SCALE 1 : 6

WARNING!
DO NOT USE FINGERS OR
HANDS TO LINE UP QUICK
HITCH AND BUCKET!

3. Once quick hitch bore
and bushing are lined up,
insert bucket pin

4. Fasten with bolt and
nut supplied

5. Ensure bucket is securely
attached and operate.

Bolt and nut

PROPRIETARY AND CONFIDENTIAL
THE INFORMATION CONTAINED IN THIS
DRAWING IS THE SOLE PROPERTY OF
HAND ENGINEERING LTD. ANY
REPRODUCTION IN PART OR AS A WHOLE
WITHOUT THE WRITTEN PERMISSION OF
HAND ENGINEERING LTD IS
PROHIBITED.

HAND ENGINEERING LTD		
TITLE:		
Coupling details - EX30		
SIZE B	DWG. NO.	REV
SCALE: 1:15	WEIGHT:	SHEET 1 OF 1